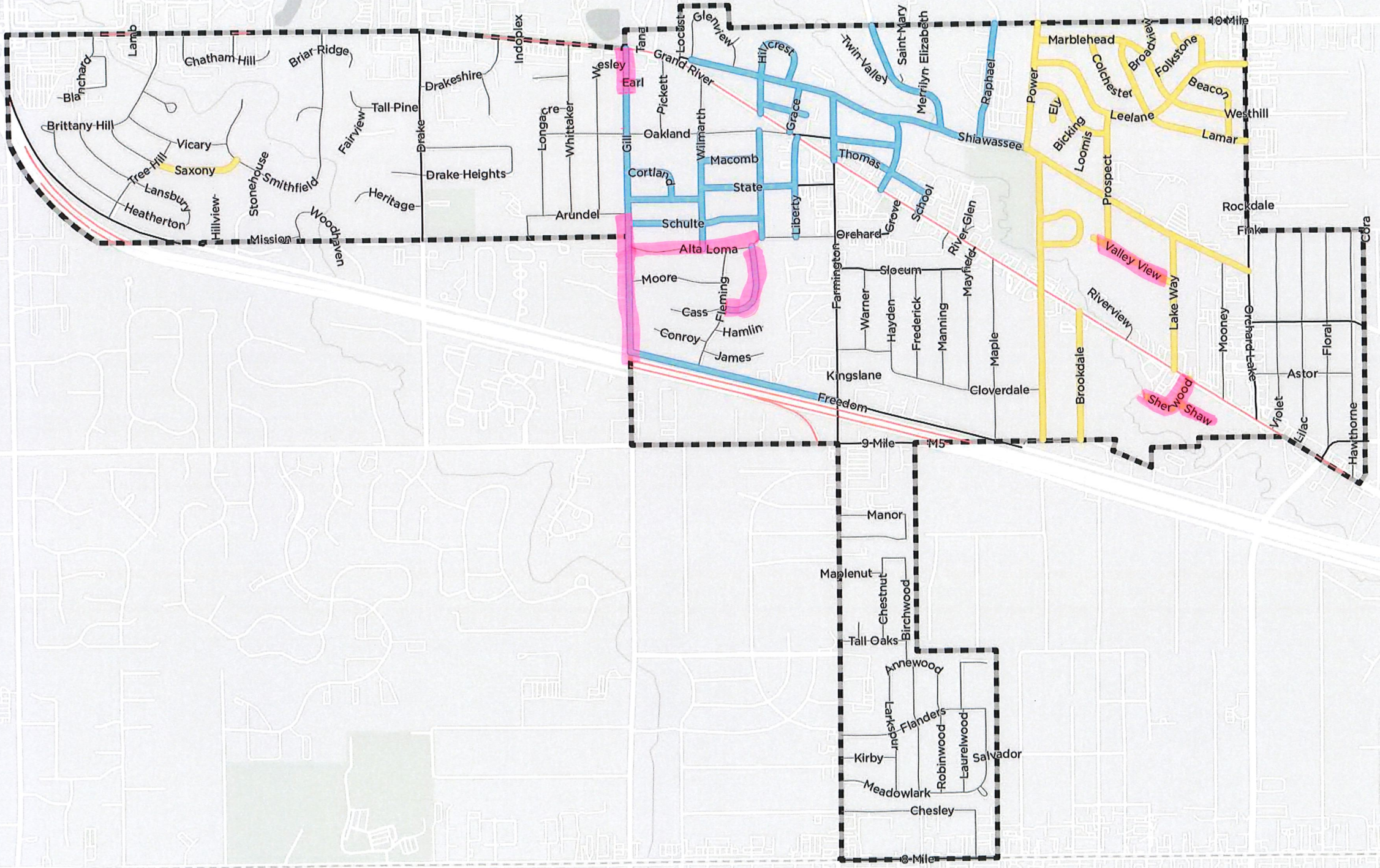


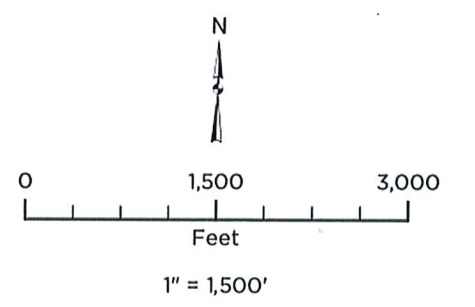


Crack Seal Map Incomplete Zones



- Priority Level for 2022
- █ 1
 - █ 2
- Farmington Roads
- Secondary Roads
 - Major Roads
 - Freeway
 - Municipal Boundary

Note: Saxony was crack sealed in 2020 along with undergoing concrete patch repairs. However, over-banding shall be completed in the areas where concrete patch repairs were completed.



Source: Data provided by OHM Advisors, Farmington, Esri, and State of Michigan. OHM Advisors does not warrant the accuracy of the data and/or the map. This document is intended to depict the approximate spatial location of the mapped features within the Community and all use is strictly at the user's own risk.

Coordinate System: NAD 1983 StatePlane Michigan South FIPS 2113 Feet Intl
Map Published: January 13, 2022

